



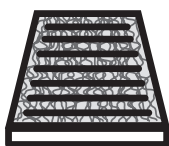
SUPREME

with anti-allergen properties



701002

FH 2002



PCA

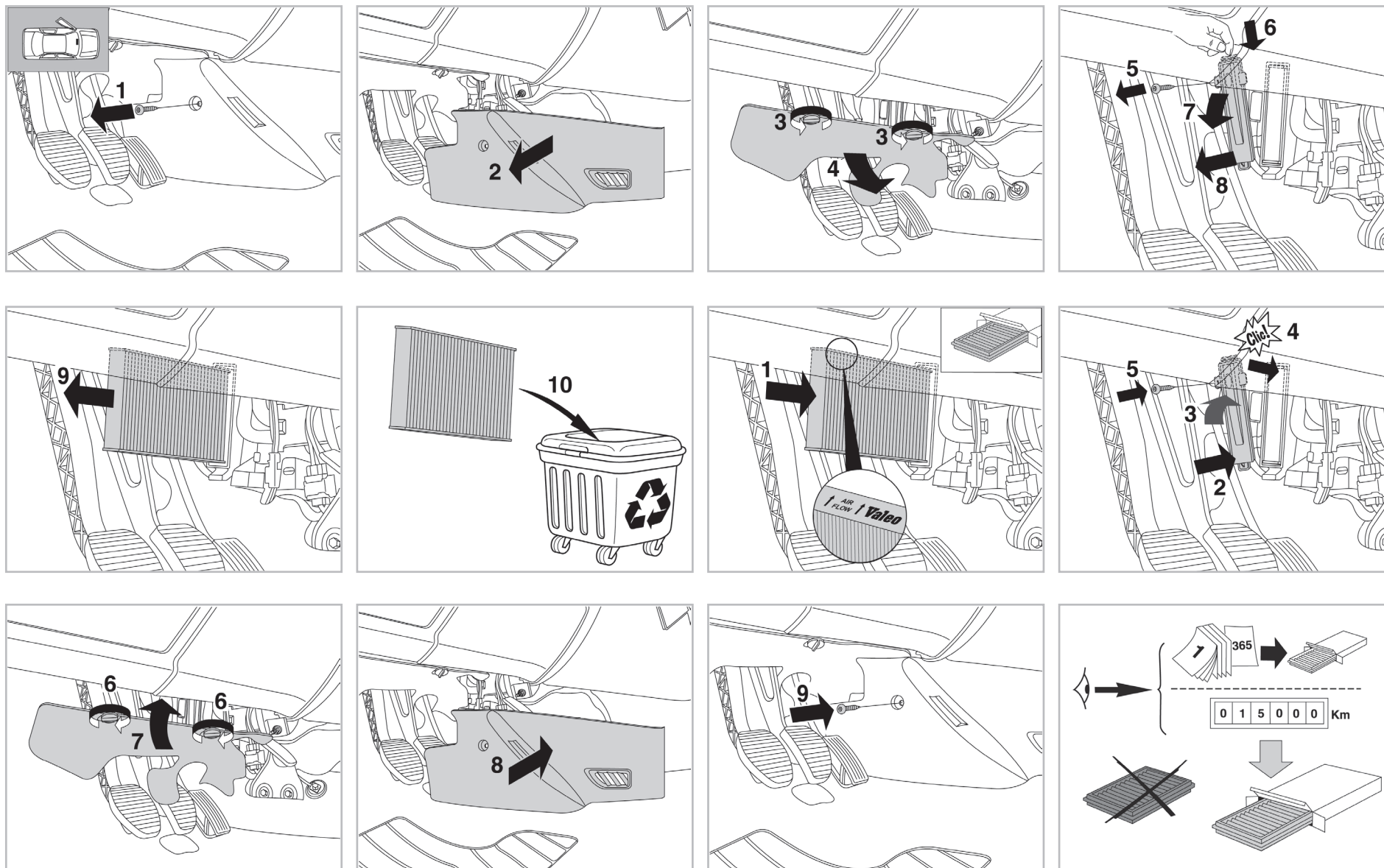
WANT TO KNOW MORE?



www.valeo-techassist.com

FOR
CITROËN
PEUGEOT

C5 A+ (09/04 > 04/08) / C6 A/C+ (10/05 > 03/08)
407 A/C+ (04/04 > 03/08) / 407 COUPÉ A/C+ (10/05 >)



Valeo Service - Société par Actions Simplifiée - Capital de 12 900 000 € - 70, rue Playel, 93285 Saint-Denis Cedex - France - B 306 486 408 RCS Bobigny